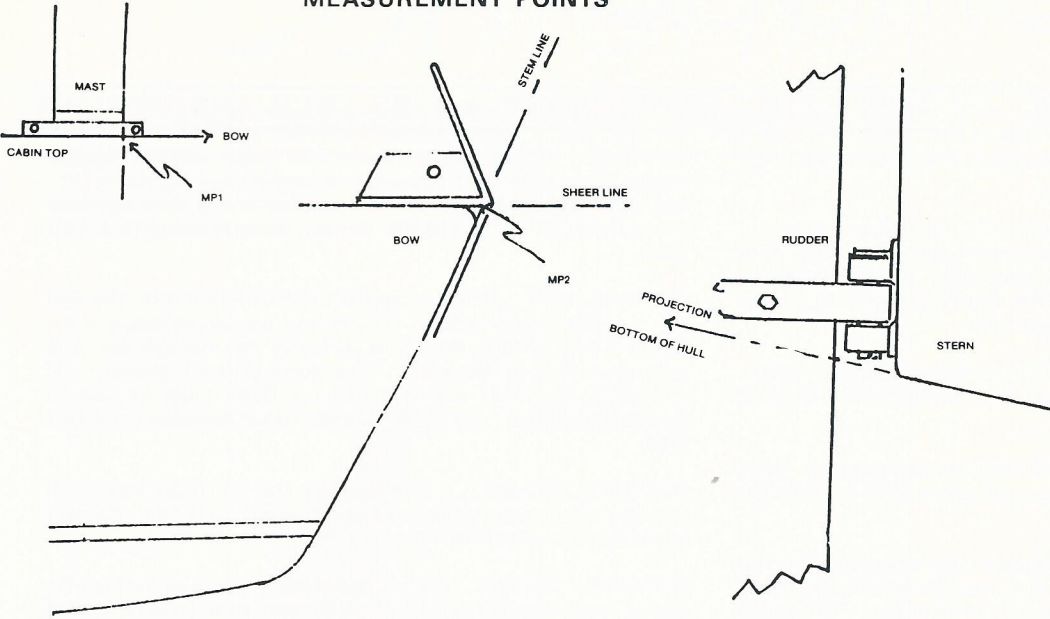
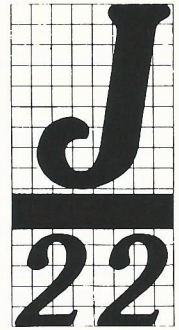


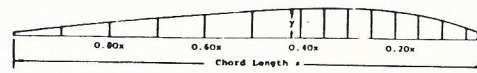
**PLAN A
MEASUREMENT POINTS**



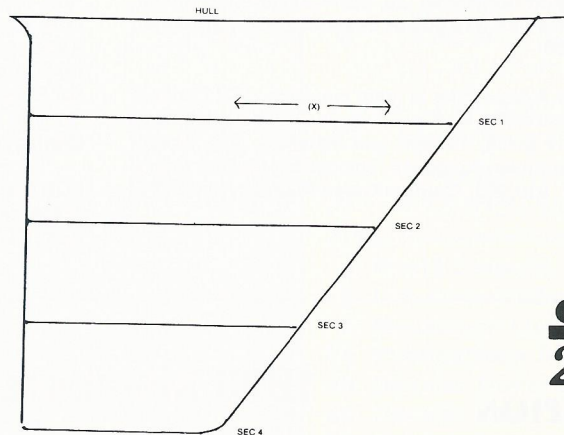
**PLAN B
INSIGNIA**



**PLAN C
KEEL PLAN**

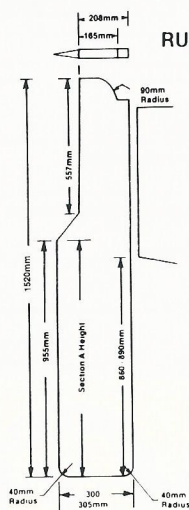


Section	1	2	3	4
Location*	216	458	700	942
Chord Length (X)	975	795	615	435
Section 1/2 Widths (Y)				
.0250	17.5	15.5	14	12
.05	24.5	22	19	16.5
.10	34	30	26.5	22.5
.15	40.5	35.5	31	26.5
.20	44.5	39.5	34	29
.25	47	41.5	36	30.5
.30	48	42	36.5	31
.35	48	42	36.5	31
.40	47	41.5	36	30.5
.50	43	38	33	27.5
.60	37	32.5	28	23.5
.70	30	26	22.5	18.5
.80	21.5	19	16	13.5
.90	12.5	11	10	8.5
Trailing Edge	3	3	3	3



*Vertical distance down from the hull ignoring the radius at the intersection of the hull with the upper aft edge of the keel.

**PLAN D
RUDDER PLAN**



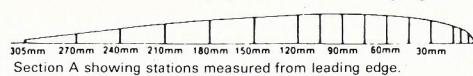
Section A Offsets in Millimeters

Offsets describe minimum half-widths at stations, which are located from the leading edge

Station	Half Width
5mm	7.0
10mm	10.0
15mm	12.0
30mm	15.5
45mm	17.5
60mm	18.8
75mm	19.3
90mm	19.6
105mm	19.7
120mm	19.6
150mm	18.7
180mm	16.6
210mm	13.7
240mm	10.3
270mm	6.6
Trailing Edge (300-305mm)	2.0

The distance from the leading edge to the trailing edge shall not exceed 305mm

Section A is perpendicular to the leading edge



INDEX TO ADVERTISERS

A.G.A. Correa	15
Boat Locker	53
Canton Glass	52
Doyle Sailmakers	37
Hall Spars	29
Harken	25
J/22	Insert
J/22	35
J World	41
Karl's Boat Shop	21
Laylin	23
Layline	27
North Sails	68
Performance Boat Services	33
Rigging Shop	51
Rook Sails	49
Shore Sails	67
UK Sailmakers	7
Ullman Sails	2